

## Timeless Traditional



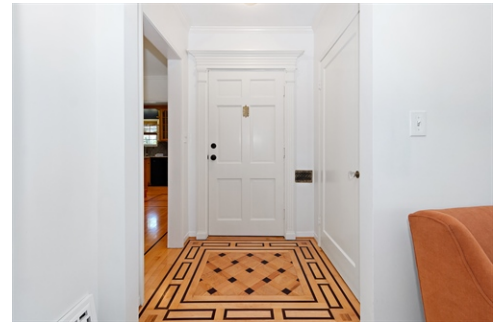
265 East Montecito Ave, Sierra Madre, CA 91024

- » Beds: 3 | Baths: 2 Full
- » Single Family | 1,653 ft<sup>2</sup> | Lot: 17,205 ft<sup>2</sup>
- » Sold \$ 50,000 over asking! Fabulous 17,205 Sq Ft Lot. Lge Utility Barn, Dble Garage, Auto Gate
- » Maple Floors--Walnut inlay, Crown molding, Chair Rails, Cabinet Blt-ins
- » Formal Entry, Dining Rm. Cook's Kitchen w/Maple Cabinets, Granite, Upgraded Appl's
- » More Info: 265EastMontecito.com



**Debbie Pock**  
 (626) 824-4114 (cell)  
 debbiepock@gmail.com  
<http://www.DebbiePock.com>

Berkshire Hathaway HomeServices  
 115 W. Sierra Madre Blvd.  
 Sierra Madre, CA 91024  
 (626) 824-4114



**Sold in 6 days \$50,000 over asking!!!** Stately early 40's Neo Traditional set on an expansive 17,205 sq ft lot, nestled on a quiet cul-de-sac in the quaint community of Sierra Madre. Awash in an abundance of natural light with open & balanced floor plan w/beautiful maple/oak floors, detailed w/delicate walnut inlay. Peppered w/ period character with cross-gabled porch, formal entryway, plantation shutters, striking Federal fireplace, decorative molding, chair rails & charming blt-ins. Classic, the formal dining room opens to the Cook's kitchen with lovely maple cabinetry, custom hood, granite counters, pantry, under cabinet lighting, Greek Key molding, touch-less faucet, refrigerator, built-in stove, dishwasher and microwave. Full bath w/Jacuzzi tub, marble tub surround, granite counters, dual medicine cabinets & retro blocked glass. Stylish new (2019) hall bath w/subway tile, quartz counters, walk-in glass enclosed shower & custom ironwork hardware. Three spacious bedrooms intricately designed with blt-in alcoves, dble wardrobe closets, custom ceilings fans, each w/French patio doors leading to a magical side veranda, cloaked by a shady trellis, lined with tall Coastal Redwoods featuring a cool misting system & ambient lighting. For the telecommuter an office /computer room benefits as a private work space. Separate laundry porch w/maple cabinetry, porcelain tiles & deep service

DRE # 01024739.

©Properties Online, INC. The above information including square footage is deemed reliable but has not been independently verified and cannot be guaranteed. BHH Affiliates, LLC, An independently owned and operated franchisee of BHH Affiliates, LLC. Berkshire Hathaway HomeServices and the Berkshire Hathaway HomeServices symbol are registered service marks of HomeServices of America, Inc.® Equal Housing Opportunity. Information not verified or guaranteed. If your home is currently listed

